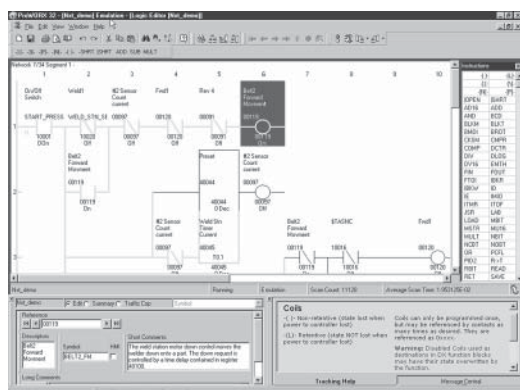


Modicon Quantum automation platform

ProWORX 32 programming software



Presentation

ProWORX 32 LL984 programming software is a full-featured Modicon Quantum and Momentum M1/M1E PLC programming software compatible with Windows platforms (98/NT/2000/XP) that gives you the power to program all your Modicon controllers online or offline, manage your I/O subsystems and analyze your plant's activity in real time.

ProWORX32 offers client/server functions for organizing groups and user rights and centralizing project backup, and serves as a bridge between design office and workshop. The project emulator makes it possible to test projects before executing them in a PLC runtime environment so as to ensure optimal system effectiveness at any time.

Some of the new ProWORX 32 features include:

32-bit processing: With 32-bit processing, ProWORX 32 is an even more powerful solution than its predecessors, ProWORX Plus and ProWORX NxT. 32-bit processing lets you utilize the power of state-of-the-art operating systems for optimal development and operational performance.

A comprehensive suite of tools: ProWORX 32 provides everything you will need to start, configure, test and debug your project, quickly, reliably and professionally. And with its improved suite of standard utilities, ProWORX 32 is a virtual "one stop shop" for your Automation Journey. No more searching on the web for special features or functions, they're all included to save you time and increase your productivity.

A high-performance offer: In addition, ProWORX 32 will simplify and speed up your system development and commissioning time with powerful diagnostics, easier integration and greater openness and flexibility.

Easier integration: Using standard Microsoft components based on ProWORX 32 opens up a wealth of user data. Import and export capabilities have been enhanced to provide a variety of integration options for HMI and third-party devices, such as a built-in "Alliance Tool" which allows users to create hardware profiles for newly developed peripherals. The profiles can even be sent electronically to Schneider Electric for inclusion in future ProWORX 32 releases.

Windows environment

The familiar Windows-based programming environment means you spend less time learning how to do things and more time being productive. ProWORX uses familiar Windows features like user-defined screens, drag-and-drop, cut-and-paste, search and global replace.

Conversion

484 to 984 in one step! The most flexible conversion tools available in the automation industry. That is the reputation ProWORX products have always enjoyed, and ProWORX 32 is no exception. With the ability to convert older project databases to this latest tool, ProWORX 32 supports almost 30 years of PLC heritage.

Multiple projects

Imagine the time and effort you could save by testing a new project with an existing project while it is running live. Now you can with the Multiple Projects function of ProWORX 32, even with two PLCs running simultaneously! Perform diagnostic checks to validate interdependencies between your emulated project and your live applications, all in real time, so you can go live with total confidence.

Intuitive register editor

A powerful analysis tool, the Data Watch Window shows you information from your plant in real time, or saves it to disk for in-depth historical analysis later on. You can easily get the data you need to make informed, effective production decisions. View and edit data in full page display, see trends and track data points against time in a spreadsheet and monitor any combinations of digital and analog data.

Presentation (continued)

I/O drawing generator

Save hours of painstaking effort with ProWORX 32's I/O Drawing Generator, which automatically creates wiring diagrams for the I/O modules defined in the Traffic Cop. Generate necessary drawings all at once or just one module at a time – simply select an address the I/O module uses with the Network Editor, then click the drawing button on the Hardware Back Referencing panel to display the diagram and, if desired, save it as an AUTOCAD-compatible .DXF file and print it.

Network editor

With the Network Editor, ProWORX 32 reduces development time by using the same commands and instructions for all PLCs. Simply cut, copy and paste networks from one platform to any other.

Program documentation

ProWORX is first-class software with first-class program documentation. Use one of the many standard templates to get started, and progress to assemble your own custom documentation. For better references and easier-to-use documentation, we have provided annotation down to "bit" level to allow longer comments and more lines of text. Even simple things like using Windows O/S fonts to eliminate printer issues demonstrates that every detail has been considered.

Real-time network status

Find the controller you need fast and simplify network diagnostics with ProWORX 32's powerful Network Scan feature. Network Scan searches your Modbus or Modbus Plus networks, then identifies and graphically displays each device found and shows its status.

Advanced I/O management

Ensure that the I/O module you are configuring in the software matches the one on your plant floor with ProWORX 32's graphical Traffic Cop. It displays I/O modules on your screen the same way they look in real life, eliminating all confusion. To place a module, just select it from the convenient drop-down menu and then drag it into the PLC slot you want. To save even more time, the Traffic Cop automatically associates the module's I/O points with a block of free addresses in your PLC. Once configured, manage your I/O with Pro WORX 32's complete documentation tools, with references for each head, drop, rack, slot and address. And the Traffic Cop's graphical display shows you at a glance that your I/O are healthy.

Presentation (continued)

Client/server tools

ProWORX 32 allows projects to be developed in a collaborative environment without sacrificing control and safety by utilizing the ProWORX 32 server as the central repository for projects, the safety centre and the hub for communications. The system administrator has total control over user accounts, user groups, passwords, access privileges and can grant access rights when and where needed.

The client/server relationship allows projects to be skilfully managed and controlled. The server can be used to keep "Master" versions of automation projects for editing (subject to rights), while editing is performed on the client. This can be done via a standalone PC or even on the server since both client and server can reside on the same PC.

The ProWORX server has the capability to schedule software backups of the applications, detect software modifications and store multiple versions. Even more powerful is the ability to communicate from the client to the server using either Ethernet TCP/IP or Modbus Plus.

Project emulator

The project emulator is a very powerful tool that will help save considerable time in developing and debugging your system. It provides the ability to test projects prior to running them in the PLC environment to ensure your system will run at peak efficiency immediately upon commissioning.

Two emulators are provided that test interdependent projects. They are used to test communication, such as I/O scanning and monitoring network activities between projects.

Material List Generation

The Material List Generation function automatically creates a list for the project, either online or offline, even taking into account the contents of the Traffic Cop. Add prices and comments once the list is generated, saving you time and ensuring that all required components are fully documented and identified.

ProWORX³²

ProWORX Client/Server software

ProWORX software packages

ProWORX software packages					
Description	Use	Licence type	Reference	Weight kg	
ProWORX 32	Server	Single-station	372 SPU 780 01 PSEV	—	
	Client/server suite	Single-station	372 SPU 780 01 PSSV	—	
	Development/runtime client	Single-station	372 SPU 780 01 PDEV	—	
		Group (3 stations)	372 SPU 780 01 PSTH	—	
		Team (10 stations)	372 SPU 780 01 PSTE	—	
		Site	372 SPU 780 01 SITE	—	
	Runtime client	Single-station	372 SPU 781 01 PONL	—	
	ProWORX 32 Lite	Development/runtime client	Single-station	372 SPU 710 01 PLDV	—
			Group (3 stations)	372 SPU 710 01 PLTH	—
Team (10 stations)			372 SPU 710 01 PLTE	—	
ProWORX 32 upgrades	Client	Single-station	372 SPU 784 01 LPUP	—	
		Additional multi-use	372 SPU 784 01 SEAT	—	
		Group (3 stations)	372 SPU 784 01 LPTH	—	
		Team (10 stations)	372 SPU 784 01 LPTE	—	

Documentation

Description	Language	Reference	Weight kg
ProWORX 32 programming manuals	English	372 SPU 780 01 EMAN	—
	French	372 SPU 780 01 FMAN	—
	German	372 SPU 780 01 DMAN	—
	Spanish	372 SPU 780 01 SMAN	—